

# FORD RANGER (2019-2023) - 37 GALLON REPLACEMENT TANK

VIEW THE INSTALL VIDEO



Click the video above or visit the link below to watch the full installation guide for the Ford Ranger replacement tank. Make sure to take a look at the next page for helpful diagrams and images to ensure a smooth install.

For questions, please call us at 208-906-2411.

[https://drive.google.com/file/d/1\\_2rgJGWBf9l4xF4X-r1z\\_CeqtVPtOIQj/view](https://drive.google.com/file/d/1_2rgJGWBf9l4xF4X-r1z_CeqtVPtOIQj/view)

<b>Brass</b> <ul style="list-style-type: none"> <li>○ 1 x P6 5/16 x 1/4 8mm Elbow</li> <li>○ 1 x P3 5/16 x 1/4 Straight</li> <li>○ 1 x P14 x 1/4 x 1/4 x 3/8 Tee</li> </ul>	<b>Cable Ties</b> <ul style="list-style-type: none"> <li>○ 2 x 7" Cable Ties</li> </ul>
<b>Bolts / Nuts</b> <ul style="list-style-type: none"> <li>○ 1 x M10 x 40mm Bolt</li> <li>○ 4 x M10 x 25mm Washers</li> <li>○ 3 x M10 Nyloc Nuts</li> <li>○ 6 x M5 x 8mm Cap Screws</li> <li>○ 12 x M5 Washers</li> <li>○ 1 x M10 x 95mm x 67mm U Bolt</li> <li>○ 6 x M5 x 10mm Cap Screws</li> <li>○ 2 x M6 x 16 Bolts</li> <li>○ 7 x M6 <u>Nyloc</u> Nuts</li> <li>○ 7 x M6 x 25 Washers</li> <li>○ 1 x M10 x 30mm 1.25P Flanged Bolt</li> </ul>	<b>Misc Parts</b> <ul style="list-style-type: none"> <li>○ 1 x FV11 Roll Over Valve</li> <li>○ 1 x LRA-FTG2 Roll Over Valve Grommet</li> <li>○ 1 x FRRR Hold Down Ring</li> <li>○ 1 x 16mm <u>Conduflex</u> @ 1400mm (E1) (55")</li> <li>○ 1 x 16mm <u>Conduflex</u> @ 650<u>mm</u> (D3) (25.5")</li> <li>○ 2 x Secondary Brackets (For Front RHS)</li> <li>○ 1 x 60 x 40 x 4 Plate with M10 1.25P Nut</li> <li>○ 1 x Spacer Plate 2mm</li> <li>○ 1 x Spacer Plate 3mm</li> <li>○ 1 x BS357 O-Ring</li> <li>○ 1 x BS337 O-Ring</li> <li>○ 1 x 8mm EFI Blanking Cap</li> <li>○ 1 x 16mm EFI Blanking Cap</li> <li>○ 1 x FLVV 60-16-06</li> <li>○ Canister Bracket</li> <li>○ 1 x ICV</li> </ul>
<b>Hose</b> <ul style="list-style-type: none"> <li>○ 1 x 16mm Fuel Hose @ 75<u>mm</u> <u>A1</u> (3")</li> <li>○ 1 x 16mm Fuel Hose @ 105<u>mm</u> <u>A2</u> (4")</li> <li>○ 1 x 16mm Fuel Hose @ 150<u>mm</u> <u>A3</u> (6")</li> <li>○ 1 x 6mm Fuel Hose @ 75<u>mm</u> <u>B1</u> (3")</li> <li>○ 1 x 6mm Fuel Hose @ 195<u>mm</u> <u>B2</u> (7.75")</li> <li>○ 1 x 10mm Fuel Hose @ 590<u>mm</u> <u>C1</u> (23")</li> <li>○ 1 x 10mm EFI Hose @ 175<u>mm</u> <u>D1</u> (7")</li> <li>○ Continued Over</li> </ul>	<b>2 x Pages Instructions Consisting of</b> <ul style="list-style-type: none"> <li>○ 2 x Fitting Kit Contents</li> <li>○ 1 x Page Secondary Bracket Photos</li> </ul>

<ul style="list-style-type: none"> <li>○ 1 x 10mm EFI Hose @ 175<u>mm D2</u> (7")</li> <li>○ 1 x 10mm EFI Hose @730<u>mm D3</u> (28.75"</li> <li>○ 1 x 8mm Fuel Hose @1470<u>mm E1</u> (57.75")</li> </ul>	
<b>Hose Clamps</b>	
<ul style="list-style-type: none"> <li>○ 2 x 8mm EFI <u>Clamps</u> (For E1)</li> <li>○ 6 x 3/8 EFI <u>Clamps</u> ( For D1,2 &amp; 3)</li> <li>○ 5 x 1/4 Hose <u>Clamps</u> (For Hose B1,2)</li> <li>○ 2 x 1/2 Hose <u>Clamps</u> (Filler Neck)</li> <li>○ 6 x 5/8 Hose <u>Clamps</u> Hose A1,2 &amp;3</li> </ul>	

## 1.) Prepare Tank for install

- a. Thoroughly clean underside of vehicle before installation
- b. Remove left rear wheel and skid plate for gas tank



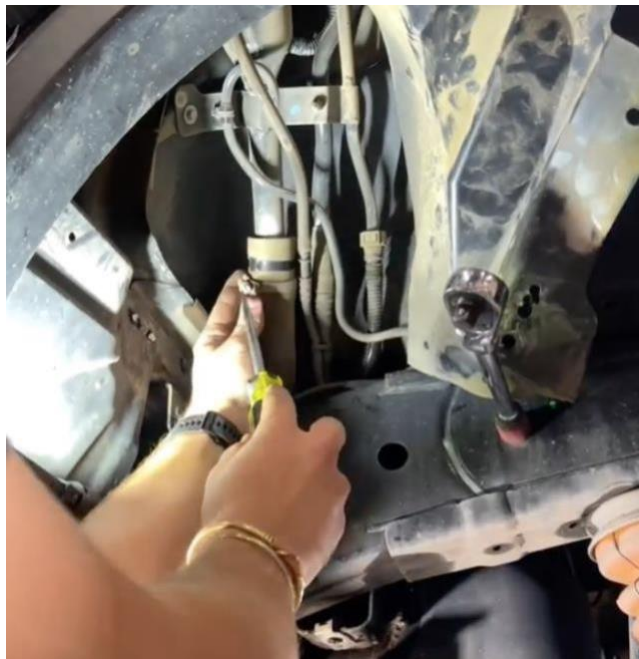
- c. Support gas tank, and remove bolts holding tank straps in place, be sure to keep the LEFT REAR bolt. It will be necessary for installing the new tank





## 2.) Remove Left rear Inner fender liner

- a. Using a Philips head screwdriver remove the clips
- b. There are 2 rivets that will need to be drilled out at the front of the fender liner as well.
- c. There is also a torques head bolt, you will need to take out
- d. Then, pull fender liner away gently to get full access to filler neck



### 3.) Disconnect filler neck

- a. Remove filler neck hose and vent lines connected to filler neck
- b. Make sure all hoses and vent lines are free and clear, to prevent damage when lowering the tank.



#### 4.) Preparing to lower tank

- a.) Remove harness that plugs into front of fuel tank
- b.) Remove high and low-pressure fuel lines connected to the front of the tank **(Be careful these hoses may be pressurized!! Remove the red and green clips gently as we will need these later.)**





#### 4.) Preparing to lower tank cont.

- c.) Remove the hoses and wires connected to the charcoal canister. Take note of location of each connector leading to the charcoal canister as we will be reusing them.





## 5.) Begin to lower the fuel tank slowly

- a.) Once tank is lowered a few inches, checkup and around the tank and ensure all hoses and wires are disconnected. Ensure you have cut the zip tie for the tubing connected to the corners of the charcoal filter.



- b.) After doing so, lower the tank completely, and move it aside so we can transfer all the parts

## 6.) Transfer Parts into Long Range tank

- a.) Clean top of removed fuel tank, prepare to move fuel pump over and modify the evap.



- b.) Install fuel pump into the tank with supplied O-ring and lock down ring (**be sure not to over tighten**)
- c.) Insert brass fittings using thread tape, as shown.
- d.) Install **d1** hose as well as block off caps on the fuel pump.

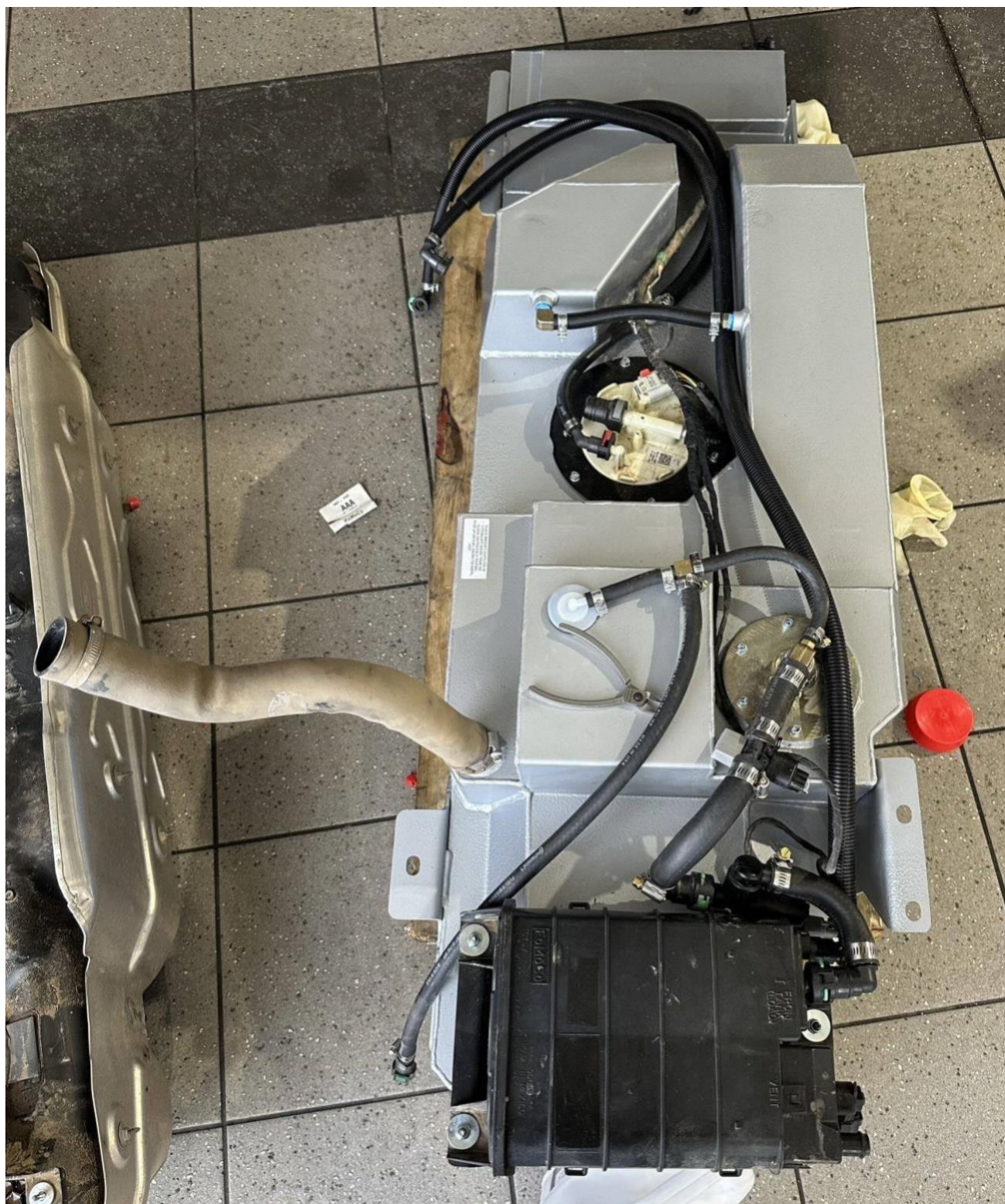
Pictures to help guide this process are included on following pages











\*Hose routing\*



## 7.) Remove all fuel lines and hoses from original tank

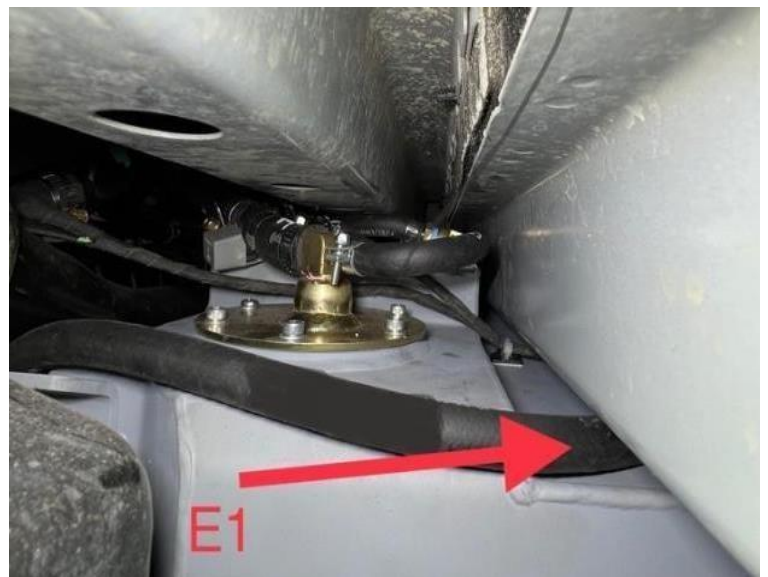
- a.) **CAREFULLY CUT** along the quick connect fittings and replace the hard plastic lines with the new 5/8 rubber lines with clamps. They are marked in order do one at a time starting with hose a1. Pay attention to the FLVV roll over valve and other components orientation

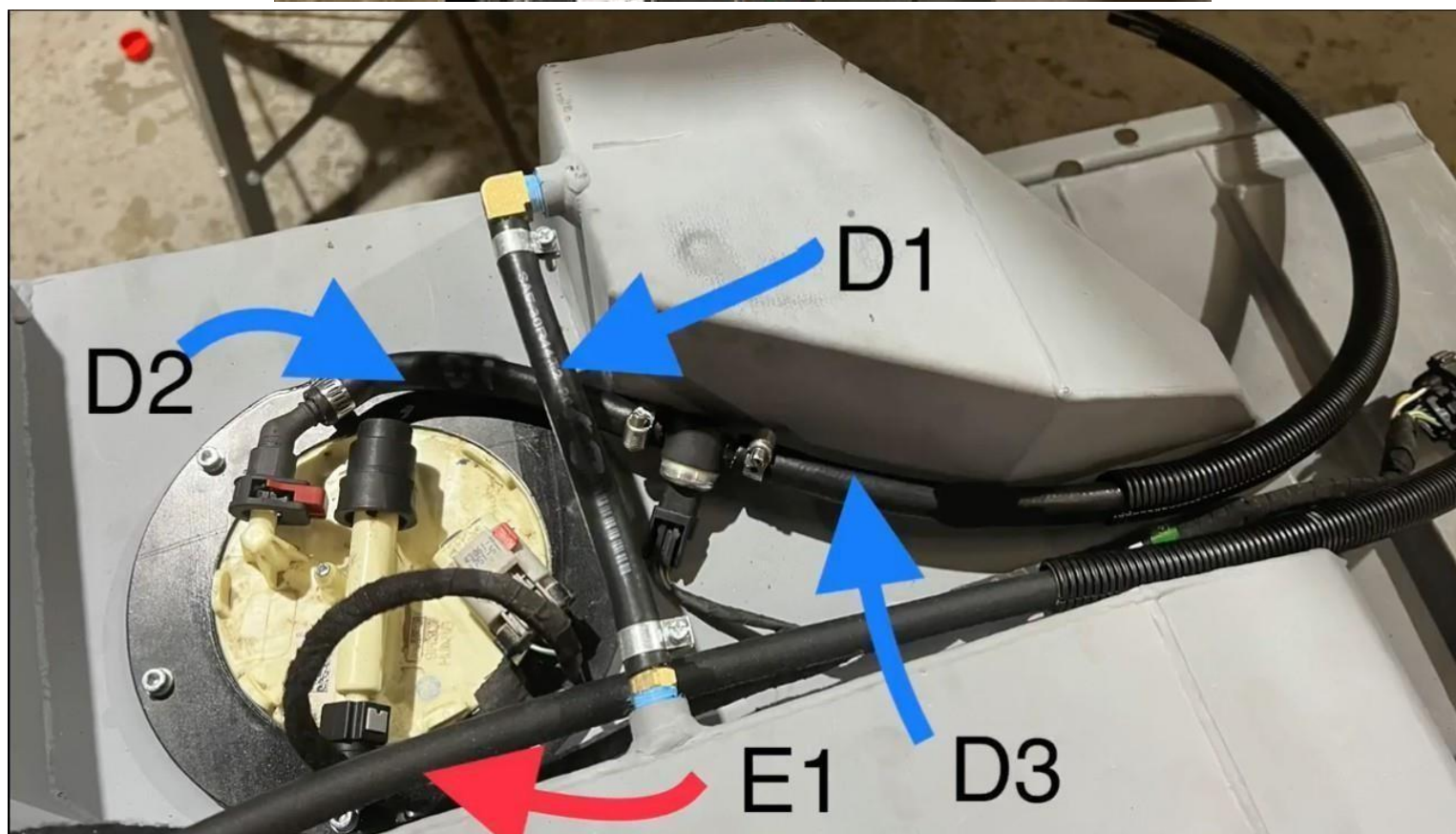
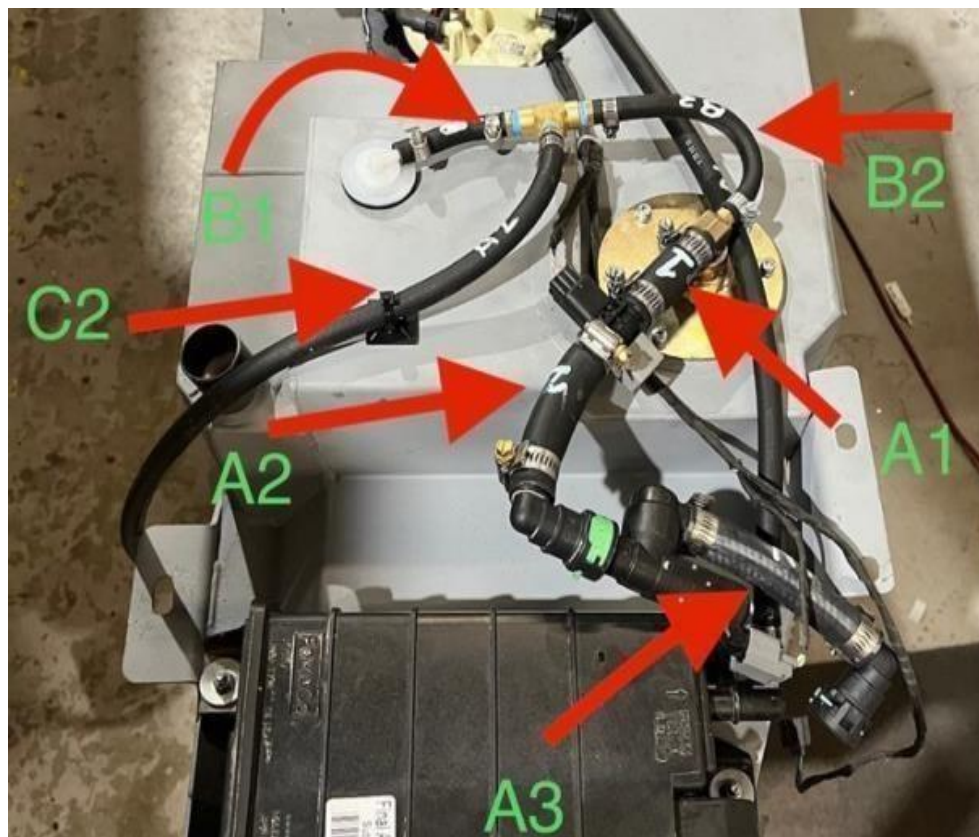


## 8.) Fuel line placement

- a.) All of the hard green gates hose will use the high pressure hose clamps with the threaded bolt on them. d1, d2, d3, and the hose from the charcoal canister e1. it is necessary to trim back the wiring harness tape to give some working slack on the wires.

(More reference images pages 13 and 15)





e



## 9.) Installing Long Range tank

- a.) Prepare to raise tank into vehicle
- b.) Ensure wires and hoses are disconnected from charcoal canister as these will go over the frame and be connected later.
- c.) Jack the new tank into place to test fit, be careful not to squish any hoses or wires (**Take careful notice of hose labeled a1,a2,a3 mentioned in previous step**)





- d.) Once in place, put the left rear factory bolt in, as well as the right rear bolt.  
**Do not snug hardware down yet**

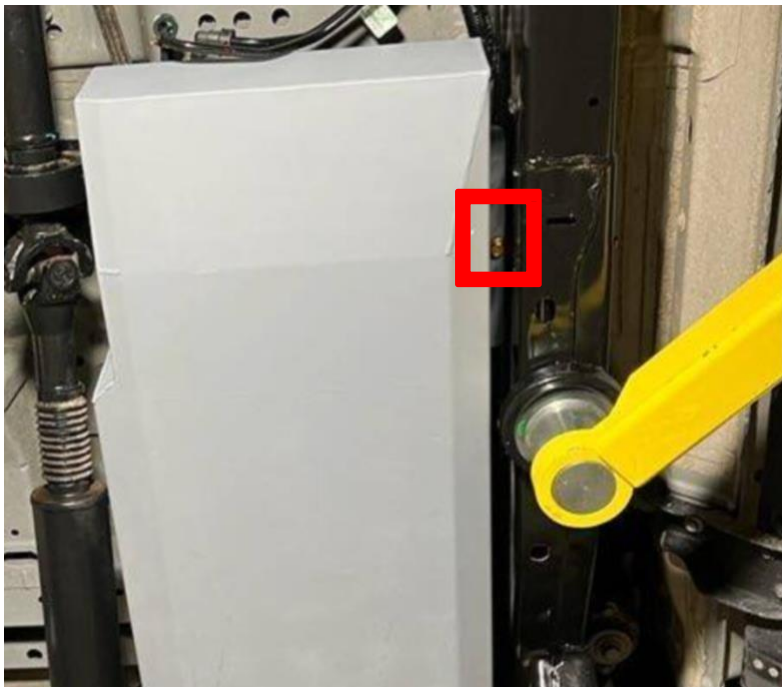


e.) Next, we will put in the house shaped retainer and the bolt on the front right of the tank.





- f.) Once all handwear is in place you can mark and carefully drill the front left hole, make use of the nut with the attached J-shaped hook to bolt it into the frame. Take special care during this portion as the brake in the area line can become disconnected



## 10.) Finalizing Long Range tank connections

- a.) With tank loosely in place double check that you do not have any pinched hoses. Take some time to look on top of the tank and make sure all hoses and wires are free of any kinks or pinches.
- b.) Run and hook up the high-pressure hoses and harness **underneath the front crossmember.**
- c.) Connect the filler neck hose as well as c2 to the quick connect vent on the filler neck (please note on some Rangers you may need to trim a bit of the filler neck rubber)







\*Filler neck hoses\*







## 11.) Finalize installation

- a.) With tank in place and everything hooked up....
- b.) tighten up all bolts by hand
- c.) ensure all hoses are securely connected, and there are no pinches
- d.) ensure power is plugged in
- e.) Make sure hose clamps are tight, and clips are seated correctly
- f.) Reassemble the fender liner after double checking all connections on filler neck.
- g.) Lower Truck down and update system with ForScan to accommodate 37-gallon tank
- h.) FORScan can be used to adjust the fuel tanks size in the vehicle's computer.  
Although we are unable to assist with this, FORScan's website details the process well in the following link.

[Details on how to adjust tank size using FORScan here](#)





**Notes:**